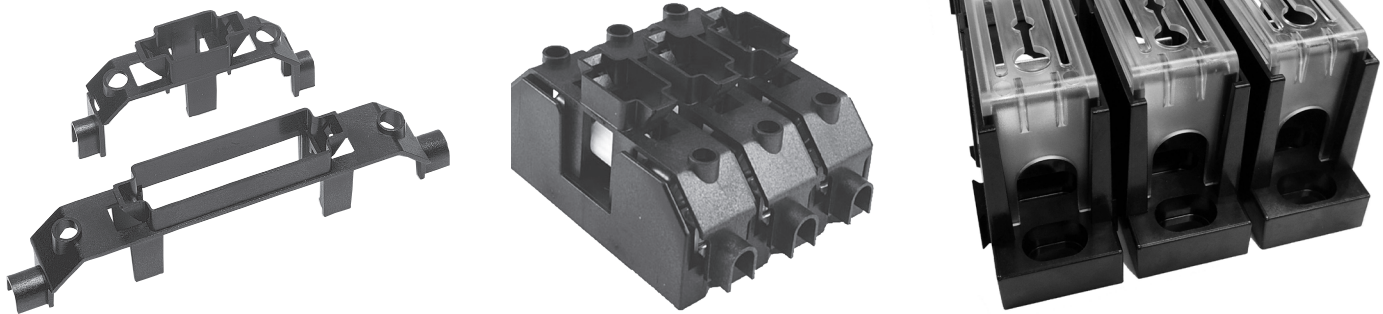


## COVERS:

UL listed accessories under file no. JDVS2.E181825  
 Opening allows view of self-indicating fuses  
 Holes for test probes and re-tightening of wire terminations  
 RoHS compliant



Fuse Holders shown with covers attached

FUSE TYPE	AMPS	VOLTAGE	CATALOG #	FOR USE WITH FUSE HOLDER #	IP2O (FINGER SAFE)*
H/R	30	250	CHR230	F30A / R30A	Yes
H/R	60	250	CHR260	F60A / R60A	Yes
H/R	100	250	CHR2100	RF100A / R100A	Yes
H/R	30	600	CHR630	6F30A / 6R30A	Yes
H/R	60	600	CHR660	6F60A / 6R60A	Yes
H/R	100	600	CHR6100	R6F100A / 6R100A	Yes
J	30	600	CJ630	6J30A	Yes
J	60	600	CJ660	6J60A	Yes
J	100	600	CJ6100-1C	R6J100A1B	No
J	100	600	CJ6100-2C	R6J100A2B	No
J	100	600	CJ6100-3C	R6J100A3B	No
J	200	600	CJ6200M	M6J200AxB ("x" for 1 or 3 poles)	No
T	100	600	CT100/200M	M6T100AxB ("x" for 1 or 3 poles)	No
T	200	600	CT100/200M	M6T200AxB ("x" for 1 or 3 poles)	No
CC	30	600	CC630	6CC30A	Yes
CD	60	600	CC660	R6CC60A	Yes
Midget	30	600	CCM630**	6M30A / 6CCM30A	Yes

\*\*Covers are recognized if used with recognized fuses

## COVER-PULLER (CATALOG # CVR-MCC):

For use with

- Class CC (30 amp)
- Midget , 10 x 38 (30 amp)

RoHS compliant

